

# The 4-H Pulse



Fayette County

May 13, 2022

## Quality Assurance

All market animal exhibitors must complete one QA for 2022.  
ALL QA MUST BE COMPLETED BY JUNE 3, 2022.

## Fayette County Shepard's Club Scholarship

Applications are available [here](#). Due July 17<sup>th</sup>

## Feeder Calf Tag-In Update

Shared on behalf of the Fayette County Ag Society, Jr. Fair Coordinator, and OSU Extension. Due to many feeder calf sales taking place after the May 1st ownership deadline and May 7th Tag-in, the decision has been made to move tag-in and ownership to May 14th. This is to allow more exhibitors the opportunity to purchase their animals from many of the sales taking place the weekend of tagging.

**NEW FEEDER CALF TAG-IN MAY 14 @ the Beef Barn 9-11 am**

## Forms Due to MAHAN MAY 17<sup>th</sup> (Tuesday) by 5:00 pm

All can be picked up at the Mahan Building

**Hog Notch Cards** – One per exhibitor. For families, if everyone completes the project animals can be shown off, of any families members card.

**Housing Forms** – Needed by an exhibitor whose project is not housed at their residence.

**Leasing/Boarding Forms** (Horses/Alpacas)

## FairEntry (Pen Assignments)

FairEntry Open: April 1<sup>st</sup> Closes: June 10<sup>th</sup> with late entries (\$25 fee) June 17<sup>th</sup>

All animals (individually, unless shown as a pen) must be entered within this system to show at the fair.

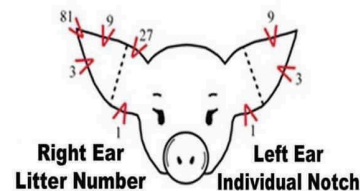
Showmanship will be signed up for in the barns.

<https://faireentry.com/GlobalSignIn>

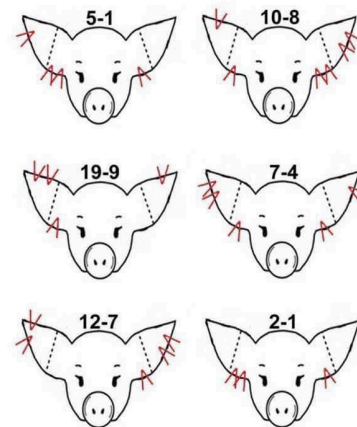
## Species Fair book Pages Posted

Please utilize when filling out FairEntry.

<http://fayettecofairoh.com/>



Here are a few examples to get you started:



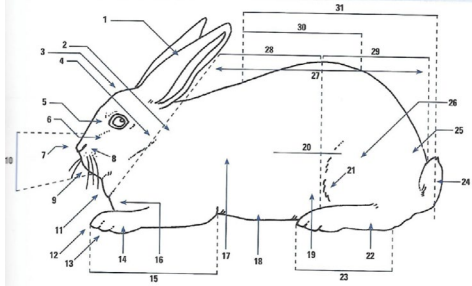
## Skillathon Study Corner

Parts. Can you identify the parts of your animal? You can get full posters via google, your project book or a resource handbook.

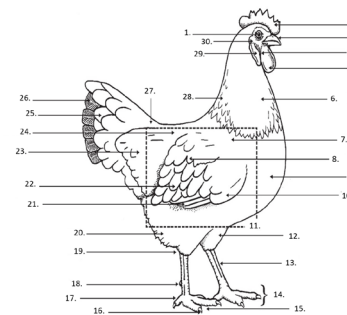
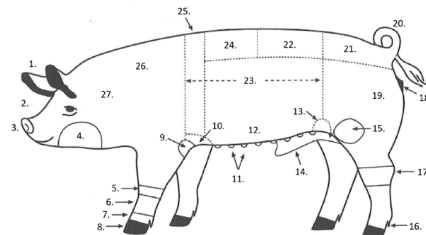
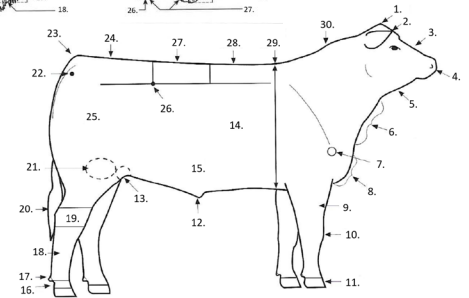
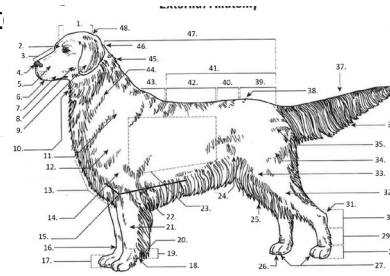
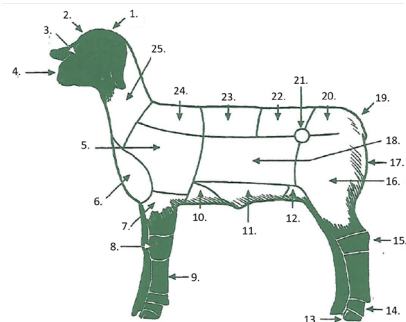
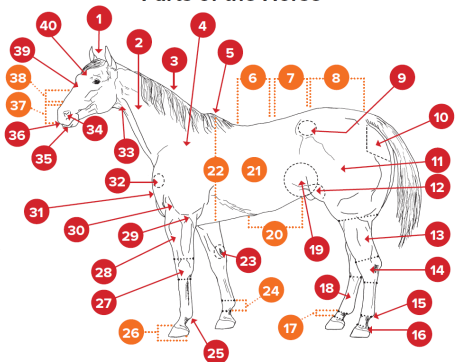
Our [website](#) has dates and additional resources.

Poultry: <https://ohio4h.org/poultryresources> or [APA Ohio State Fair Skillathon Resources](#)

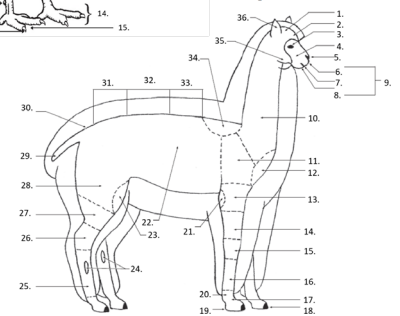
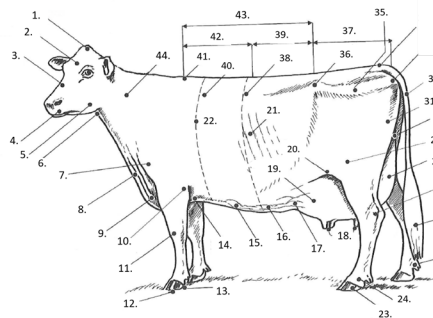
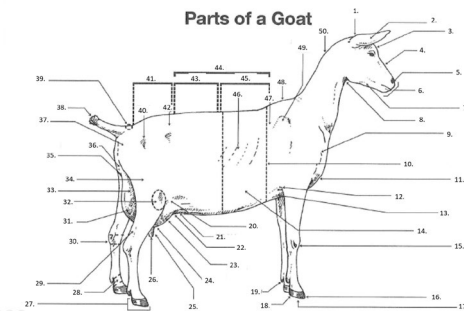
This link allows you to practice with actual pictures and post <http://www.geauga4h.org/skillathon.htm>



Parts of the Horse



Parts of a Goat



## Skillathons

If you cannot attend the schedule skillathons or multi-species, please contact the office to schedule a makeup skillathon. Makeup Skillathon: June 23, 2022 (Register by June 10, 2022)

June 30, 2022	July 5, 2022	July 6, 2022	July 7, 2022
	<b>Multi-Species Skillathon</b> 9am-3pm (by appointment)	<b>Multi-Species Skillathon</b> 9am-3pm (by appointment)	<b>Multi-Species Skillathon</b> 9am-3pm (by appointment)
<b>Skillathon - Poultry/Horse</b> 5-7pm @ Extension Office	<b>Skillathon - Hog/Alpaca</b> 5-7pm @ Extension Office	<b>Skillathon - Rabbit/Dog</b> 5-7pm @ Extension Office	<b>Skillathon - Sheep/Goats/Cattle</b> 5-7pm @ Extension Office

- If you feel you have tested up an age level, you must be able to present red card for clarification.

## Book Checks

**Opens June 1.** Youth must be present with their project book when being checked. This is for youth who have tested out of skillathons. They must be completed by July 7th at 7:00 pm. Prior to skillathons, book checks are done in the Extension office.

## Fayette County 4-H Fundraiser

The Fayette County 4-H Committee are selling these awesome 4-H Signs! Proceeds from this fundraiser will be put back into the program to assist youth through scholarships (senior and camping), youth who cannot afford membership dues or project books, in addition to updating the 4-H Chuckwagon that all clubs work at during the Fayette County Fair.

By purchasing one of these amazing metal 4-H signs you will be supporting a local business and the 4-H program! The signs are 13"x 14" and weigh 2lbs 8oz. They are heavy-duty, durable, and can be displayed anywhere. Whether you are a 4-H alumni of the county or a current member this sign would make a fantastic gift or keepsake to honor your time as a member or even as one of our amazing volunteers.

If your interested in purchasing your very own, please contact the Extension office 740-335-1150 or stop in and place your order today! We do ask that you pay at the time of ordering.



**Follow US on Social Media**

<https://www.facebook.com/FayetteCounty4HOHIO>



## Additional Resources

[Fayette County Extension Website](#)

[4-H Family Guide](#)

[Quality Assurance](#) – must be completed 45 days prior to exhibition

[Volunteers](#)

### Important Dates

- Feeder Calf Tag-in – 5/14/2022
- Hog Notch/Leasing/Housing/Boarding Forms Due Mahan – 5/17/2022
- Queens Applications Due Mahan – 5/20/2022
- 4 wk. Rabbit Doe & Litter Breed Date – 5/24/2022
- Market Chicken Hatch Date – 6/1/2022
- All QA Must be Complete – 6/3/2022
- Rabbit Tattooing – 6/6/2022
- Fair Entries Due – 6/10/2022
- Late Entries (\$25) – 6/17/2022



**THE OHIO STATE UNIVERSITY**

COLLEGE OF FOOD, AGRICULTURAL,  
AND ENVIRONMENTAL SCIENCES



CFAES provides research and related educational programs to clientele on a nondiscriminatory basis. For more information, visit [cfaesdiversity.osu.edu](http://cfaesdiversity.osu.edu). For an accessible format of this publication, visit [cfaes.osu.edu/accessibility](http://cfaes.osu.edu/accessibility).